

**Immanuel United Church**  
**Newsletter**  
**March, 2012**



***Holy Week and Easter Worship at Immanuel in 2012***

<i>Palm Sunday</i>	<i>April 1</i>	<i>11:00 a.m.</i>	<i>Palm Sunday worship at our usual 11:00 time</i>
<i>Good Friday</i>	<i>April 6</i>	<i>11:00 a.m.</i>	<i>Quiet and reflective worship with special music offered by the Immanuel Choir</i>
<i>Easter Sunday</i>	<i>April 8</i>	<i>7:30 a.m.</i>	<i>Sunrise Service—informal worship with communion, followed by breakfast. Please take note that this service will be half an hour later than in previous years.</i>
<i>Easter Sunday</i>	<i>April 8</i>	<i>11:00 a.m.</i>	<i>Communion service featuring special music offered by the Immanuel Choir</i>

*We hope you'll come and join us for worship during this holy season of the church year.*

## *A Lenten Message*

When I had the opportunity, last summer, to visit the Anglican Cathedral in Exeter, England, I expected to be moved by the thought that my father's parents, and my ancestors for many generations before them, had stood where I stood in that beautiful building and been awestruck by its majesty. And indeed, standing in the massive Gothic sanctuary with its high vaulted ceiling and breathtaking stained glass was a powerful experience of connecting with my own roots in the Christian tradition. But it was in one of the small chapels lining the perimeter of the church's interior that I found myself unmistakably to be in the presence of the Spirit. Outside this small chapel was a blue banner with the painted symbol of a dove identifying it as the Chapel for Justice, Peace and Creation. Below it were printed these words: *"This space is open for prayer and reflection with a special focus on issues of social, environmental and international concern. You are invited to rest here awhile and quietly reflect on the theme displayed or on other matters of justice, peace and ecology. Welcome."* I had learned that many lives had been lost, and the Cathedral itself had suffered significant damage, during the Exeter Blitz in World War II, and it was clear to me that the members of the congregation might have an important witness to bear about matters of peace. And so I took them up on their invitation to rest there awhile. As I walked through the door into the Chapel, I was struck by the brightness of the light flooding through the windows into the small space, and by the simplicity of the small altar in front of the window. But immediately my eyes were drawn to a stunning sculpture several feet above the altar: a large crown of thorns made of burnished steel, suspended from the ceiling with simple wire. I offer for your Lenten reflection a photo of the crown of thorns, and the description of it that was provided for the visitors to the Chapel: *"In the Christian tradition, the crown of thorns was placed on the head of Jesus prior to his crucifixion, as a parody of kingship. In medieval times, the crown of thorns served as a reminder of the humility required of the church if it was to demonstrate the love of God. The twisted nature of the painful thorns recalls both injustice and a warped use of a life-giving plant. The pointed barbs offer us a sense of the horrors of war and the incarceration of human beings. The weight of the structure reminds us of the heaviness of oppression, and those who struggle for liberation from cruelty or domination. However, the break in the crown also leaves room for hope and possibility beyond the pain and pressure. This Chapel stands in contrast to the symbolism of the thorns, and seeks to counter violence, repression and environmental destruction—instead seeking to promote justice, peace and the wholeness of creation."* Surely the church everywhere should stand in contrast to the symbolism of the thorns. May our Lenten journey strengthen us for making such a stand. The peace of Christ be with you all.

*Nancy Sanders*

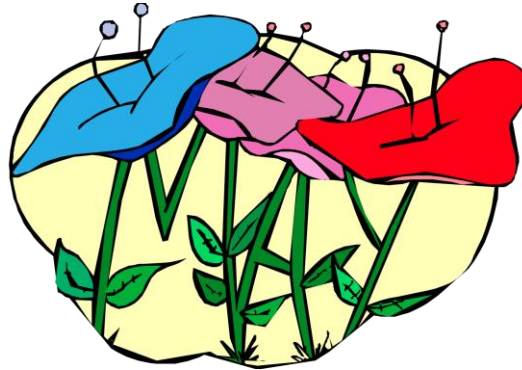


*The Exeter Crown of Thorns, inspired by a long-time member of the Cathedral's Board for Christian Care, Ben Grimsey, and created by a local sculptor by the name of Matt Dingle.*

### A Room with a View

The office continues to be busy and I always look forward to seeing and hearing from people. I am looking forward to spring weather, although we have been pretty lucky with the weather this winter. I look forward to the upcoming Immanuel Players Production. I am in the office Tuesday to Thursday mornings.

*Sharon Vandenberg, Office Administrator*



### River Elm Breakfast Program Report



Immanuel United Church started sponsoring the breakfast program at River Elm Elementary School about one year ago. We supply funding and volunteers to make and serve breakfast as well as clean up for approximately 35-50 children one day a week.

We wish to thank the congregation for their financial support for such a worthy program. It would be appreciated if the support to be continued. Because of your generosity, we have been able to replace two aging toasters as well as purchase some children's mittens.

The River Elm Breakfast Crew includes Marlene McNabb, Teri Gartner, Diane Letwin, Connie Kryschuk, Linda Gibson and Joan Borton as well as our always willing spares, Muriel Kenyon and Sharon Barbour.

Being involved in this program has made us very aware of the needs in our own community and has taught us the blessing of giving to those less fortunate than ourselves.

Submitted by Linda Gibson and Joan Borton

The Outreach Committee has designated the third Sunday of every month as "Stella Sunday", and receive donations of food for Stella's Sunday afternoon programming. Donations of high protein canned meats and beans, cheez whiz, jams, peanut butter, crackers, juice boxes, baby food, baby supplies and also cookies and buns would be greatly appreciated. The Outreach Committee will make sure these items get to Northend Stella.



If you've ever been seated at any public performance near people who talk incessantly or behave obnoxiously, you'll appreciate, Lawrence Casler's comedy, **"A Night in the Theatre"**. You'll meet two couples, the Paces and the Lockers, who attend a cultural event each week but still haven't learned how to behave in a theatre.

## **Immanuel Players'**

production of

**Lawrence Casler's**

comedy



**Starring**      Jim Hatherly      Pat Schulz

Clark Kenyon      Joy Weizel

**At Immanuel United Church**

**April 19, 20, 21, 2012**

**Curtain Time: 8:00 p.m.**

For tickets call church office at 669-0220 or e-mail [iuchurch@mymts.net](mailto:iuchurch@mymts.net)

Cost: \$12.00 (includes dessert)

Produced by special arrangement with

Samuel French, Inc. New York City.

## FINANCE COMMITTEE

**STATEMENTS:** Financial statements were mailed in February. Please take a few minutes to check your statement and advise Sharen or Arlene of any changes, errors or omissions.

**HIGHLIGHTS:**

Fowl Supper	\$6,681.00 (\$569.00 more than last year)
White Gift	\$1,631.00 (\$393.00 less than last year)
Co-Op Rebate	\$405.75 (\$44.00 more than last year)
Rewind Concert	\$1,515.85
M & S	\$21,796.00 (\$234.00 less than last year)

**E-MAIL:** If you would like to receive Immanuel's newsletter electronically, please advise Sharon Vandenberg of your e-mail address.

**STEWARDSHIP:** The Stewardship campaign is similar to the Christmas Eve service. We start by asking the question "How do we present the same message that the congregation hears every year in a new and exciting way?" This year the committee decided to inject some fun into the presentation by performing a skit called the "Stewardship Game". So far, you have only heard the first week's presentation and have already figured out that the "contestants" are completely clueless. Fortunately, the "judges" are quick to point out the error of their thinking and enlighten them with the Stewardship message.

Deadline for the return of the Time and Talent sheets and pledge cards is **April 1, 2012**.

**DEFICIT:**

	<b>2011</b>	<b>2012</b>	<b>Difference</b>
<b>Operations</b>			
Income	\$101,148.00	\$99,239.00	-\$1,909.00
Expenses	\$98,719.25	\$108,845.00	+\$10,126.00
<b>Deficit/Surplus</b>	<b>+\$2,428.00</b>	<b>-\$9,605.00</b>	<b>\$12,033.00</b>

Respectfully submitted:

Connie Kryschuk

## **White Gift Report for Outreach by Lynne Strome**

Thank you for contributing to White Gift Sunday. The following indicates how your many gifts were distributed:

AGAPE TABLE: This inner city soup kitchen provides “a nutrition centre dedicated to nourishing the body, mind and spirit of all who desire our services, in a safe and dignified environment.” Along with a hot daily meal for all guests, Agape offers a special “Table for Kids” as well as a “Breakfast Program” for kids. Children make up at least half of the population that relies on Agape Table.

**Christmas 2011 Immanuel contributed \$300.00 (three hundred dollars) to Agape programs.**

WINNIPEG HARVEST: Some Immanuel volunteers serve a Winnipeg Harvest Food Depot from the church every second Monday. In a thank you letter from Harvest we are told that 55,000 Manitobans rely on their services each month adding that they utilize strong volunteer support. Like the money, they could always use more. Every \$1.00 donated buys \$20.00 of food.

**During Advent 2011 Immanuel members gave \$500.00 and seven boxes of food to Harvest.**

RAYMOND FLETT MEMORIAL CHURCH: We have developed a friendship relationship with this All Native Conference church. We have studied various Aboriginal and First Nations issues and events together over the years. It is an Outreach hope to continue this friendship.

**Each year Immanuel supports the feast at Raymond Flett with \$100.00 and party foods.**

LITE: In Winnipeg’s core LITE works with community partners to assist in success for small businesses and offer employment for inner city citizens. We have used Neechi Foods services on occasions here at Immanuel but LITE also works with Native Women’s Transition Centre, Odd Jobs for Youth, Spence Neighbourhood and many like organizations. In their Thank You Letter we are told “without the generous gifts from our donors, we would not be able to support programs like the Food Connection project, and would therefore not be able to help women overcome barriers to employment in our inner city.”

**White Gift 2011 sent a cheque to LITE in the amount of \$300.00 in support of their work.**

NORTH END COMMUNITY STELLA MINISTRY: Immanuel has a covenant relationship with “Stella”. For many years now, volunteers have worked at, and shared in various activities from Tax returns to Sunday Circle. Through Stella Sundays, congregation members provide greatly appreciated non-perishable foods for gatherings at the ministry and for emergency supplies. We, in turn, have learned much and grown in our understanding of our First Nation brothers and sisters.

**At the close of 2011 Immanuel sent five boxes of food, 6 boxes of gifts, 5 quilts and \$547.40.**

INTERFAITH IMMIGRATION: As well as with Stella, Immanuel United is a “Partner in Mission” with Interfaith Immigration. You may recall that money from the Refugee Fund was donated in December. Throughout the year opportunities to donate furniture, blankets, dishes etc. provide needed supplies to New Canadians.

**The November Immanuel Blanket Makers gave 28 children’s quilts to help the refugee families.**

### **IMMANUEL BLANKET MAKERS (IBM)**



The Blanket Makers met on Tuesday, March 13<sup>th</sup>.

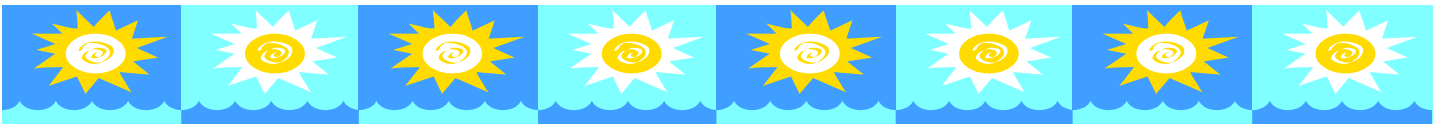
Thank you to all participants and to all the donations to make this a successful event.



As a member of the congregation you might not always know what is going on in those boisterous Sunday School classrooms behind you. The members of the CE committee are quite excited about it and would like to keep you informed.

Throughout January, Nancy Barbour and Marian Mathews led a unit entitled “Choices.” The current Sunday School unit, which is referred to as “Sharing Talents,” is being taught by Jim and Trish Goldrup. It ran until Sunday March 11th. We are looking forward to March 18th and 25<sup>th</sup> when Richard and Martha Sawchuk will once again be helping the children to paint Ukrainian Easter Eggs. The final Sunday School block will run from April 1<sup>st</sup> to May 6<sup>th</sup> and is called “Being a Christian.” This unit will be taught by Nanette McKay and Scott Douglas. Please take note of the following important dates: April 8<sup>th</sup> is Easter Sunday and there will be no Sunday School, but there will be activity bags provided for the children as there have been in the past; May 13<sup>th</sup> will be the last week of Sunday School. On this day there will be a windup barbeque as well as recognition of Sunday School students and teachers.

Submitted respectfully by Scott Donnelly (member of the CE committee)



### **“Rewind” Fundraiser Concert**

The Outreach Committee is delighted to inform everyone that the proceeds from this concert in support of Immanuel’s Refugee Fund totaled \$1515.85 (after expenses). This total includes an \$80.00 donation from the “Rewind” group, which is a percentage of their CD sales at the concert. Thanks again to everyone who helped make the evening such a success. We hope you had as much fun as we did!



## Ministry and Personnel Committee

One of the committees of our church that is seldom heard from is the Ministry and Personnel Committee. The following is from the official national M&P guidelines: "M&P Committees are mandatory committees required by the by-laws of the United Church ... We describe ourselves as 'being in ministry together' recognizing that the work of paid ministry personnel is only part of the ministry that takes place in the pastoral charge. The M&P Committee oversees relationships within the pastoral charge ministry, particularly the roles and functions of paid leaders and employees..."

Immanuel 's M&P committee includes Cindy Smyth and Rob Smith as co-chairs, Elaine Hickerson, Neil Barbour, Verna McKay and Scott Douglas. We meet monthly except in the summer. Some of our meetings include some or all of the church staff.

We have the good fortune at Immanuel to have excellent staff and we are proud of all of them. This makes our responsibilities much easier but we do want to be there as support for our staff. We are also available as liaison if there are any issues or concerns from the congregation that need to be addressed. From time to time our committee makes recommendations to the board regarding issues that relate to salary, planned vacations, study leave, workshop opportunities, working conditions, office equipment, staff safety etc.

Recently we became aware of a situation where one of the staff was working in the church alone when an individual, unknown to that staff person, came into the church and spent some time unsupervised in the lower level. We recommended to the board that there be a policy of the church door being locked when any staff or other individuals are working in the church alone. We have verified that the buzzer and the intercom at the front door are in working condition so that someone needing entry to the church can buzz the office for admittance and be buzzed in from the office. Several committee members and staff have keys and know the security code so they can admit themselves as required. This recommendation was accepted by the board. We hope you will understand and that it does not unduly inconvenience any of you.

We thank those many church members who have served on this important committee over the years.



Thank you, members of the Immanuel Family, for your expressions of sympathy and support, your prayers and your hugs on the recent passing of our much loved Neva.

*Glenn, David, Peter, Diane, Jane, Paul, Brett, Cassidy and Donald*

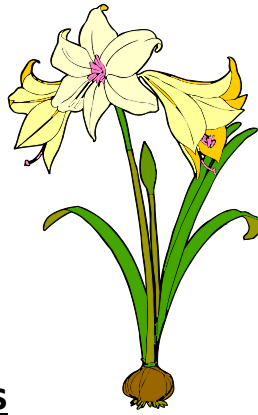
## Phone Directories

Immanuel's 2012 phone directories are now available.

The cost of printing was \$2.50, so donations would be appreciated.

They are available on Sundays after Worship or please call or see Sharon in the office.





## **Amaryllis**

I couldn't even spell it until I looked it up in my Oxford Dictionary. Norah gave me one before Christmas. It didn't look like much – just a green, knobby stem in a pot – so I put it on a stool behind where I usually sit in the living room. I wouldn't have to look at it. Once in a while I did look at it, and I noticed the knobs expanding a little. After a few days they looked like buds, so I moved the plant to where I could see it from my chair. Just before Christmas a beautiful, large, white flower emerged, and then gradually faded, but, would you believe, on Christmas morning a second beautiful, white flower came out. I enjoyed it for several days and then it, too, faded, and I thought the Amaryllis had done its work. I cut off the brown stem, but I didn't dispose of the plant because there was a second small green stem. It wasn't very shapely, so I put the pot back behind my chair. As I watered it I saw that there were some knobs forming on the stem, and as before, the knobs became buds. When the buds became heavier they weighed the stem down until it cracked, and I wondered if the buds would ever become flowers, so I pushed a stick into the pot and tied the stem up to it. Soon it became apparent that my splint might be doing its work. A second stem emerged, a tall one, with three or four buds at the top. Now, as I write, five weeks after Christmas, I'm amazed at what I see. The Amaryllis had eight large, beautiful, white blooms, four on the healthy stem and four on the broken stem.

Is there something here more than I can see? We are in the midst of Epiphany, and perhaps the Amaryllis has something to say about this season; I don't know. But it seems to me it is in tune with Lent and Good Friday and Easter. It seems to know something about keeping one's eyes on the goal when the way is hard, perhaps something also about the gifts that can come, even in the midst of brokenness.

*Doug McMurtry*

## Festival du Voyageur



This may seem like a strange subject to be thinking about in Lent, but today I feel a strong connection. Norah took me to the Franco-Manitobain Cultural Centre for the noon lunch and program offered there as part of the Festival. As soon as we arrived I could sense a good spirit in the place. The Voyageur at the door greeted us in French, and then in English and told us where to find a good seat, and pointed out the food line. When we took a place in the food line a young French-speaking black man smiled and stepped back to offer us his place. From the food list I chose some pea soup, tortierre and sugar pie – not a balanced meal, but already I was getting in the mood. At the table the volunteer waiters, not all young but wearing colorful sashes, made us feel like honored guests. And the music! That was something else, three singers with accordion, guitars, washboard, mouth organ, foot drum, and more. It was loud, and I usually don't like loud music, but with the musicians giving it their all, and sweeping us all in the "joie de vivre", I was soon foot-tapping and hand-clapping like everybody else. One little discordant note was the three young people at our table eating hotdogs; maybe that was because hotdogs were the cheapest item on the menu; they were obviously enjoying the music. It was plain that there was a lot of goodwill around. As an Anglophone I saw our Francophone neighbours in a new light. What they were offering us, in the second official Canadian language, was good for us all. They were offering us goodwill and joy.

Lent is usually thought of as a subdued time, because we are reminded that the Way is a costly way. I don't deny that, and I'm aware of what it has cost some people. Again with Norah, I had visited Louis Riel's grave just a few days earlier, and I remembered the final injustice done to a Metis leader who stood up for the rights of his people. But I'm also aware that the Way is more than a valley of tears; to be faithful even at some cost is to find inner peace and joy.

It's not that joy is so scarce that you have to grab on to it whenever it shows up. I think joy is all around us, sometimes in surprising places and situations, and you only need to recognize it, and see it as one of the signs of being human, yes, of being spiritual, and even as a part of Lent. That's what I thought about in St. Boniface, two days after Ash Wednesday at the Festival.

*Doug McMurtry*  
February 24, 2012

## Staff

Nancy Sanders, Minister

Sharon Vandenberg, Office Administrator

Jim Goldrup, Caretaker

Eileen Metcalfe, Choir Director

Peter Fyne, Organist

J. Douglas McMurtry, Minister Emeritus

William Hickerson, Minister Emeritus

Immanuel United Church

755 Golspie Street

Winnipeg MB R2K 2V4

Phone: 669-0220

Fax: 669-2374

Email: [iuchurch@mymts.net](mailto:iuchurch@mymts.net)

Website: [immanuelunitedchurch.net](http://immanuelunitedchurch.net)